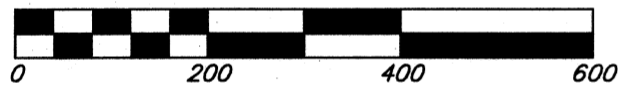


EXHIBIT A

FOR IMPROVEMENT LOCATION REPORT
No. 10100533



SCALE: 1"=200

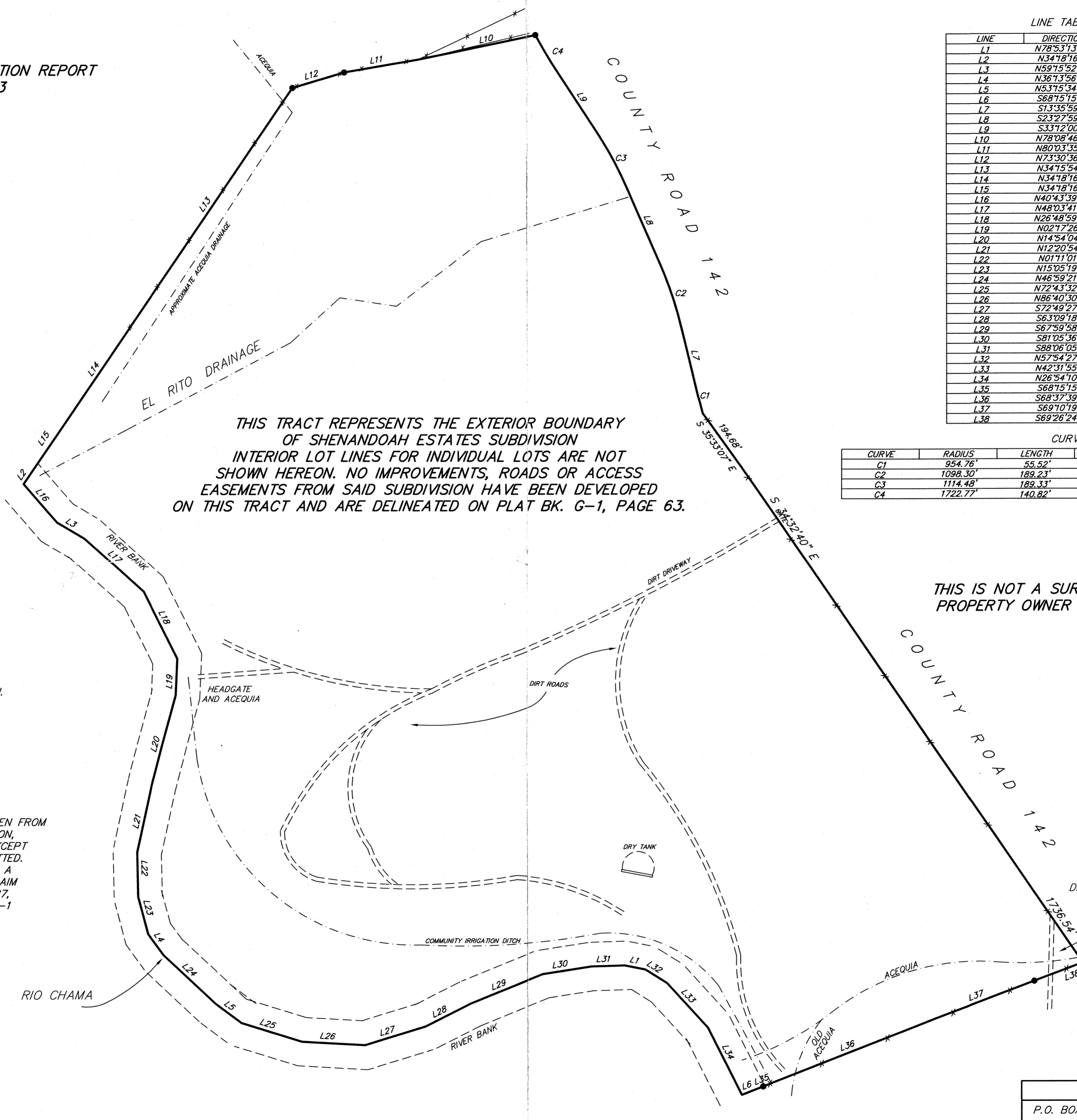


LEGEND

- Points found and used as noted.
- Power poles.
- x-x Fences.
- Walls.
- ▨ Concrete.

NOTES

1. EXTERIOR BOUNDARY INFORMATION IS TAKEN FROM A PLAT OF SHENANDOAH ESTATES SUBDIVISION, RECORDED IN PLAT BK. G-1 AT PAGE 63 EXCEPT WHERE BEARINGS AND DISTANCES WERE OMITTED. BEARINGS AND DISTANCES WERE USED FROM A PLAT ENTITLED TRACT CONSOLIDATION BY CLAIM OF EXEMPTION BY EDWARD M. DOAK, PS 8127, DATED MARCH 4, 2003, RECORDED IN BK. A-1 PAGE 40.



LINE TABLE

LINE	DIRECTION	DISTANCE
L1	N78°53'13"W	60.44'
L2	N34°18'16"E	58.73'
L3	N59°15'52"W	91.18'
L4	N36°13'56"W	76.16'
L5	N53°15'34"W	93.84'
L6	S68°15'15"W	65.85'
L7	S13°35'59"E	203.92'
L8	S23°27'59"E	237.31'
L9	S33°12'00"E	186.34'
L10	N78°08'46"E	348.36'
L11	N80°03'35"E	214.65'
L12	N73°30'36"E	156.53'
L13	N34°15'54"E	809.31'
L14	N34°18'16"E	337.74'
L15	N34°18'16"E	175.16'
L16	N40°43'39"W	147.99'
L17	N48°03'41"W	231.37'
L18	N26°48'59"W	215.99'
L19	N02°17'26"E	106.00'
L20	N14°54'04"E	266.35'
L21	N12°20'54"E	200.58'
L22	N01°11'01"W	128.18'
L23	N15°05'19"W	111.89'
L24	N46°59'21"W	204.95'
L25	N72°43'32"W	181.90'
L26	N86°40'30"W	183.00'
L27	S72°49'27"W	182.91'
L28	S63°09'18"W	145.42'
L29	S67°59'58"W	226.18'
L30	S81°05'36"W	143.66'
L31	S88°06'05"W	95.90'
L32	N57°54'27"W	73.76'
L33	N42°31'55"W	173.91'
L34	N26°54'10"W	217.14'
L35	S68°15'15"W	42.00'
L36	S68°37'39"W	488.06'
L37	S69°10'19"W	307.90'
L38	S69°26'24"W	149.55'

CURVE TABLE

CURVE	RADIUS	LENGTH	CHORD	BEARING	DELTA
C1	954.76'	55.52'	55.51'	N15°15'56"W	03°19'54"
C2	1098.30'	189.23'	188.99'	N18°29'38"W	09°52'17"
C3	1114.48'	189.33'	189.10'	N28°20'00"W	09°44'00"
C4	1722.77'	140.82'	140.78'	S30°51'24"E	04°41'00"

THIS IS NOT A SURVEY FOR USE BY A
PROPERTY OWNER FOR ANY PURPOSE

DEL RIO SURVEYS, INC.
 P.O. BOX 22773 SANTA FE, NM 471-0887
 PROJECT No. 10100533 Dwg. PW Ckd. DV
 Date: 10/22/10