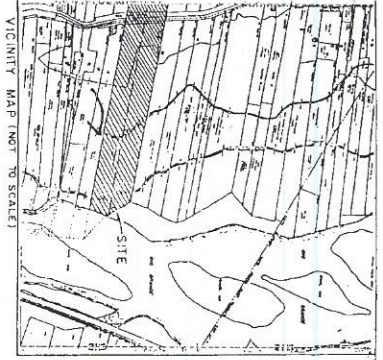


Legend



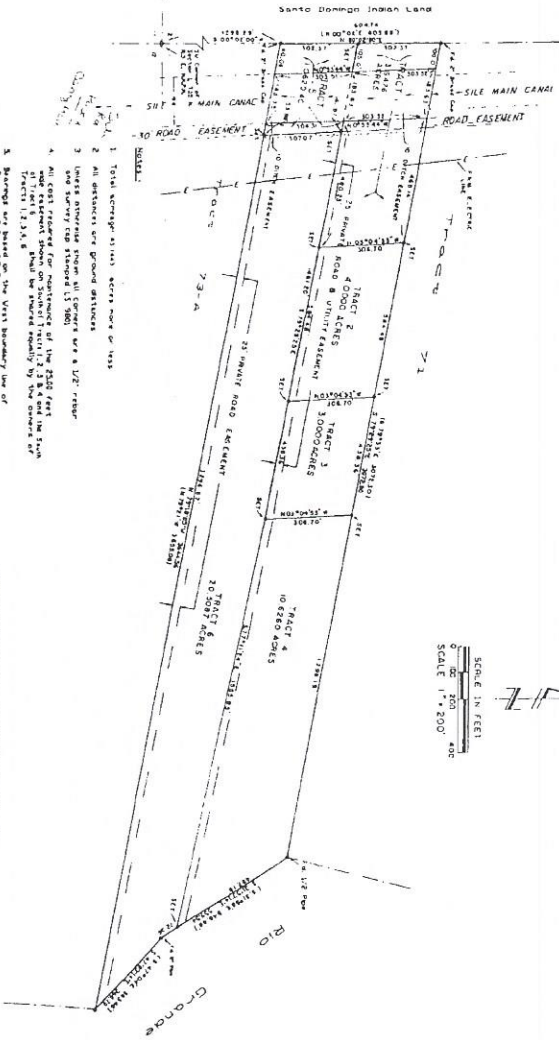
0 1 2 3 4 5  
MILES

Middle Rio Grande Conservancy District



VICINITY MAP (NOT TO SCALE)

Amended Plat  
of Tracts 1, 2, 3, 4, 5, 8, 6, 01  
**LANDS OF GRIEGO**  
Being a Report of Exception No. 10, P.C. 6,  
S.I. 3, Exception No. 11, S.C. 7, P.L. N.M.P.M.,  
Sedona Council, New Mexico  
December, 1993



1. Total acreage of this report is 1033.
2. All distances are ground distances.
3. Units are given in feet or feet and inches.
4. All bearings are true bearings.
5. Bearings are based on the West boundary line of Section 1, T15N, R5E, N.M.P.M.
6. Approximate bearings and distances are given for the easements and other features shown on this plat.
7. Information shown in parentheses is based on records.

Distance Statement: Tract 12, Section 4, T15N, R5E, N.M.P.M. shown on this plat is based on the distance from the corner of Tract 12 to the corner of Tract 1.

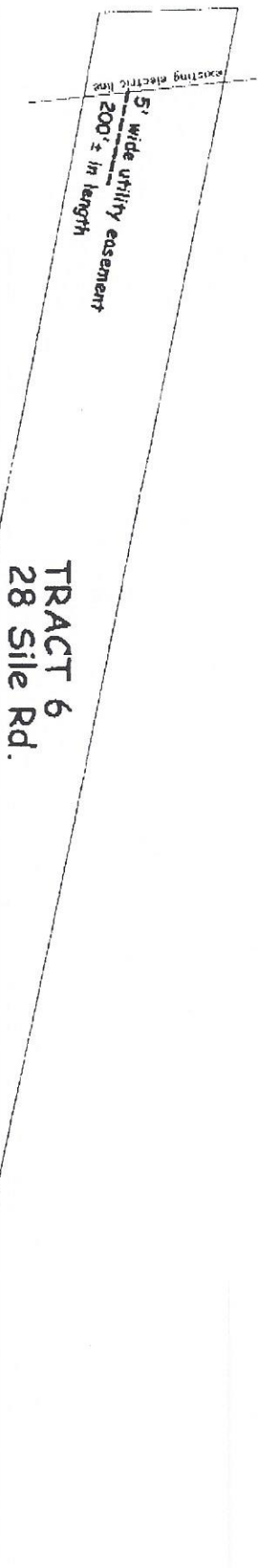
**LEGAL DESCRIPTION**  
A certain portion of the Report of Exception No. 10, P.C. 6, S.I. 3, Exception No. 11, S.C. 7, P.L. N.M.P.M., Sedona Council, New Mexico, is hereby reported as follows: Section 1, T15N, R5E, N.M.P.M., is divided into six tracts, to-wit: Tract 1, 2, 3, 4, 5, 8, 6, 01, containing a total area of 1033 acres, more or less, as shown on the plat hereto attached, and as more fully described in the report of exception hereto attached.

*Raymond A. Blunier*  
Sedona Council, New Mexico  
December 11, 1993

Witness my hand and seal of office this 11th day of December, 1993, at Sedona, New Mexico.  
By Commission Expires 3-9-94  
*Jornay Melendy*  
Sedona Council, New Mexico

**STATE OF NEW MEXICO**  
COUNTY OF COCHISE  
I, *James D. [Signature]*, County Clerk, do hereby certify that the foregoing plat and report of exception were filed for record in my office on this 11th day of December, 1993.  
At my office in Sedona, New Mexico.

*Raymond A. Blunier*  
Sedona Council, New Mexico  
December 11, 1993  
3-915B  
G-38



Tract Six (6) as shown on plat entitled "Lands of Griego being a Replat of Tract 72, N.R.G.C.D. Map 4" filed as Document #46787 in the Office of the Sandoval County Clerk, Bernalillo, NM.

**Exhibit "A"**

SANDOVAL COUNTY  
 200729390  
 Book- 410 Page- 29390  
 2 of 2  
 07/19/2007 01:07:56 PM