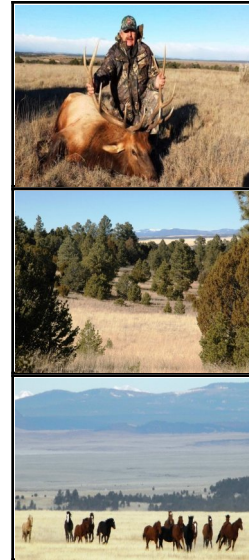


# Mora River Ranch - 1,000 acres

Walker & Martin Ranch Sales | 720-441-3131



## Property Address

Off Hwy 97 near Valmora  
Watrous, New Mexico 87753

## Property Description

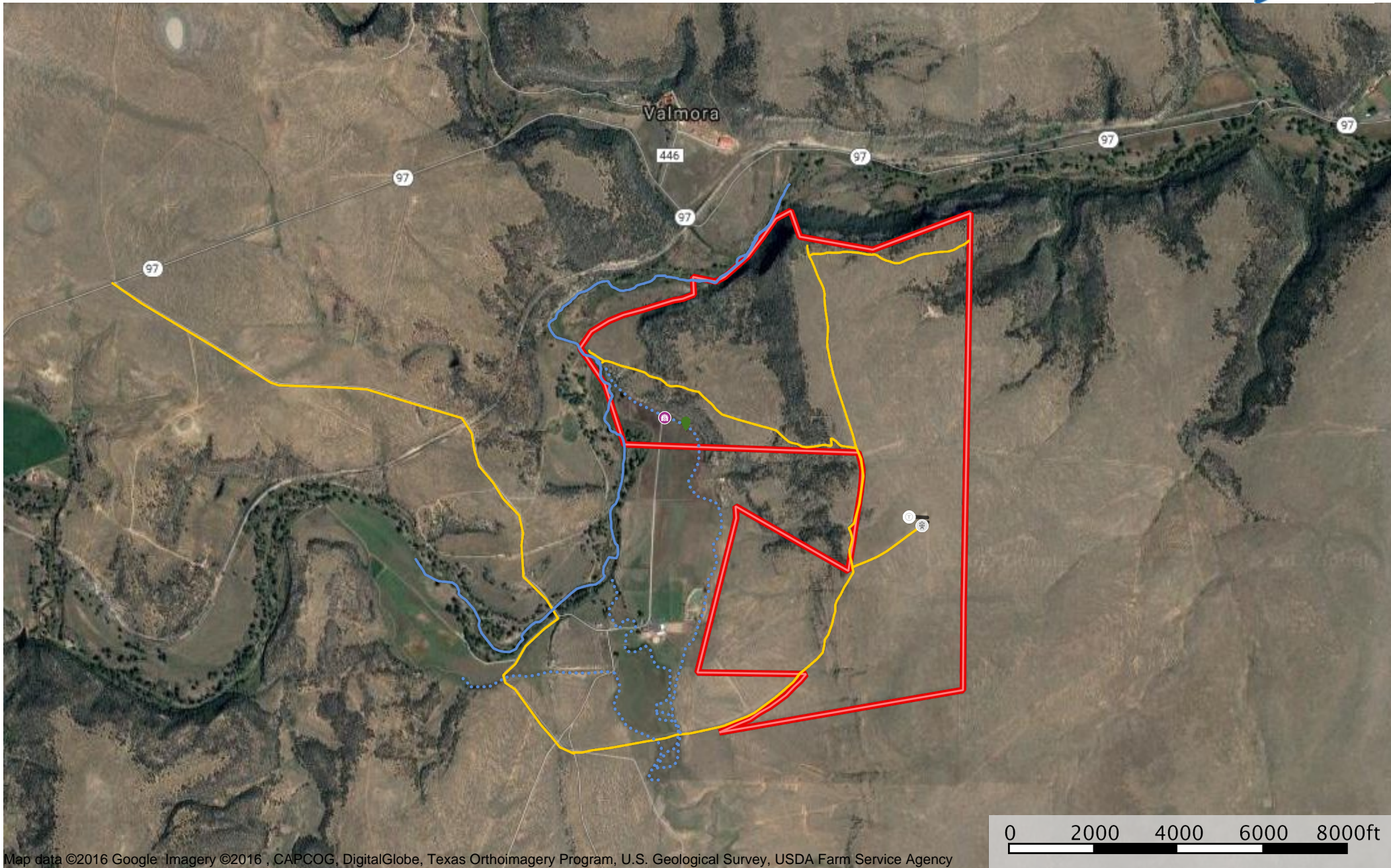
Mora River Ranch - A beautiful 1,000 acres with live water just one hour and 20 minutes from Santa Fe! Nice river bottom and dramatic bluffs that overlook the valley 300 feet below. Lots of Mora River flows thru the ranch and along the ranch boundary. Large herds of elk move through the property and owner tags are available - GMU 42. Diverse topography and elevation change. Nice combo of open pasture and wooded cover. The property is at the end of the road and has a small irrigated field. An old windmill well has an electric submersible now. A neighbor currently leases the grazing. The ranch is divided into seven legal 140-acre-tracts with good roads, sensible covenants and electricity on site. Just east of I-25 at Watrous, this is a unique and historically interesting location. Wildlife abounds, but city conveniences are only 18 miles away in Las Vegas

## Property Highlights

- Price: \$1,375,000.00
- Acres: 1000.00
- County: Mora
- State: New Mexico
- Closest City: Watrous
- Property Type: Ranches, Riverfront Property



Greg Walker or Robert Martin  
720-441-3131  
505-603-9140 Robert  
Santa Fe, NM 87507  
[www.riverranches.com](http://www.riverranches.com)



Map data ©2016 Google Imagery ©2016 , CAPCOG, DigitalGlobe, Texas Orthoimagery Program, U.S. Geological Survey, USDA Farm Service Agency

- Trough
- Windmill
- Barn
- Marker
- River / Creek
- Stream
- Primary Road
- Boundary